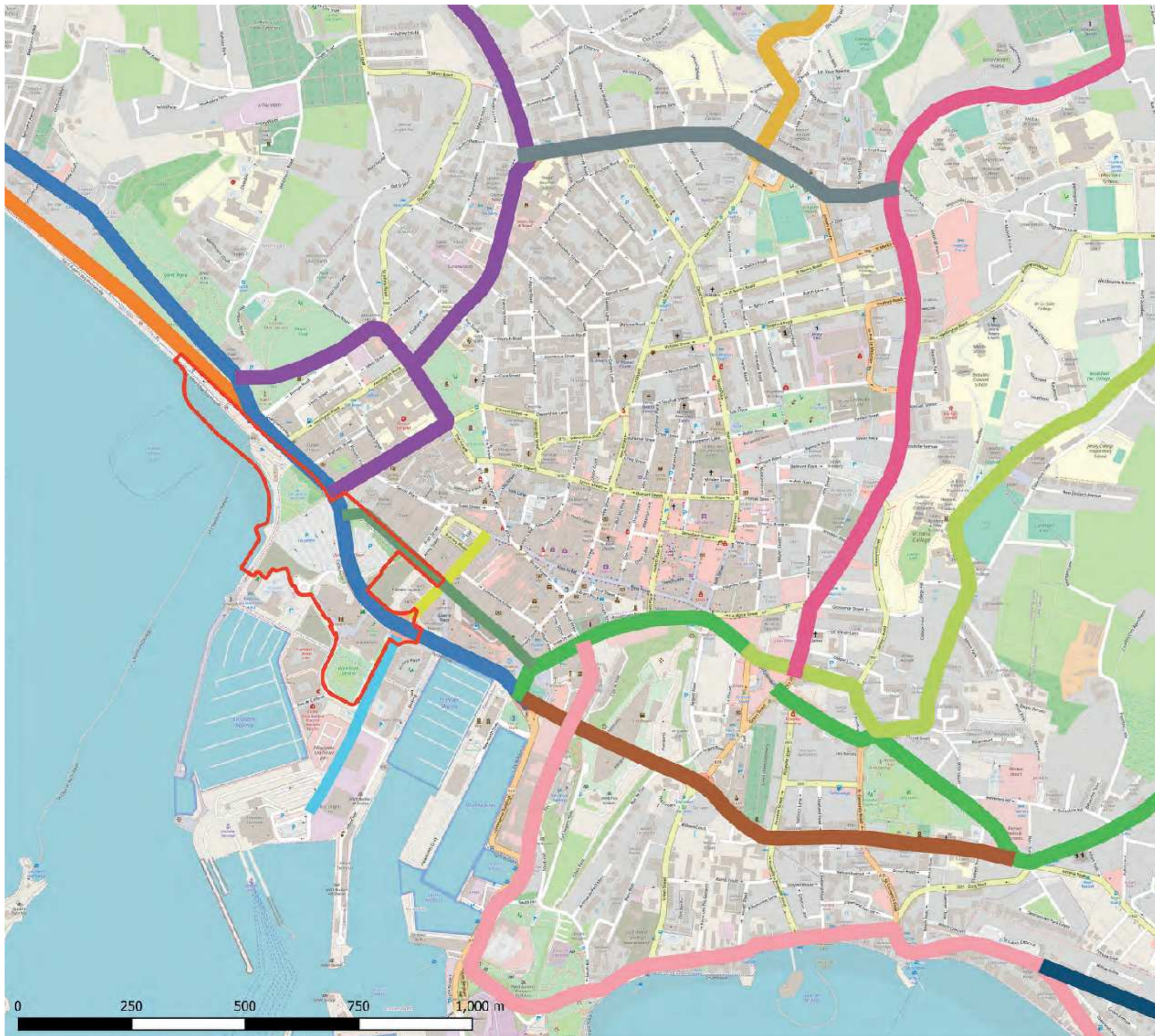
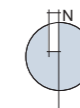


IGN, Esri, HERE, Garmin, INCREMENT P, Intermap, USGS, METI/NASA

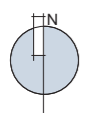
Project Details	WIE17128-100: The Waterfront, South West St Helier
Figure Title	Figure 9.1: Heritage Assets
Figure Ref	WIE17128-100-GIS-EIS-9.1A
Date	2022
File Location	\\s-inc\wiel\projects\wie1728\100\gis\eis



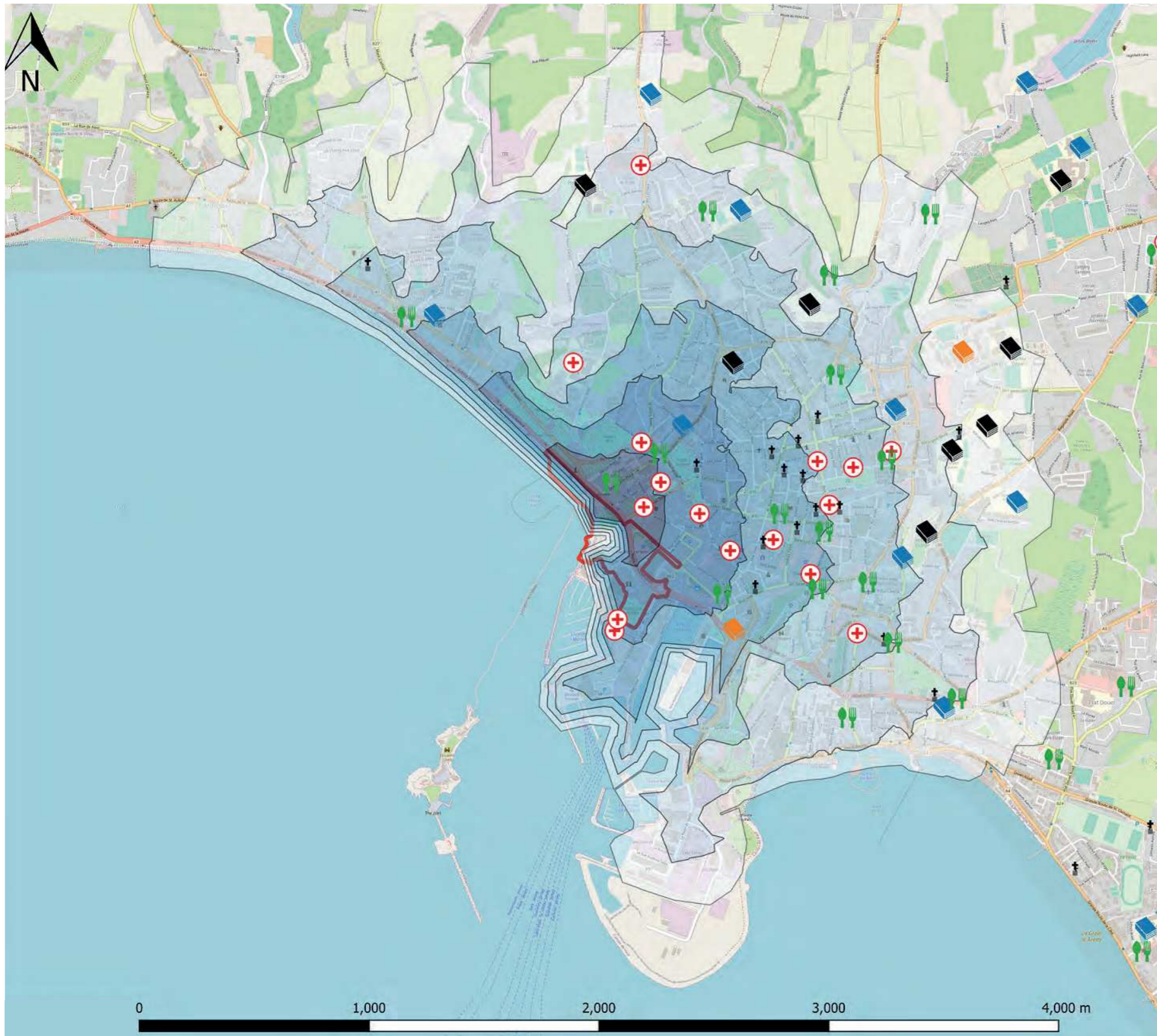
- Site Boundary
- Strategic Highway Network
- A1
- A2
- A3
- A4
- A5
- A6
- A7
- A8
- A9
- A14
- A17
- Castle Street
- Esplanade
- Route du Port Elizabeth



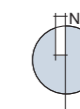
Project Details	WIE17128-100: The Waterfront, South West St Helier
Figure Title	Figure 10.1: Principal Highway Connections Surrounding the Site
Figure Ref	WIE17128-100_GR_EIS_10.1A
Date	2022
File Location	\\s-incs\wie\projects\wie17128\100\graphics\eis\issued figures



Project Details	WIE17128-100: SWSH Visioning Framework
Figure Title	Figure 10.2: Bus Routes Serving the Site
Figure Ref	WIE17128-100_GR_ES_10.2A
Date	2021
File Location	\\s-inc\wiel\projects\wie17128\100\graphics\es\issued figures



- Site Boundary
- Walking Isochrone**
- 0 to 5 Minutes (400m)
- 5 to 10 Minutes (800m)
- 10 to 15 Minutes (1,200m)
- 15 to 20 Minutes (1,600m)
- 20 to 25 Minutes (2,000m)
- 25 to 30 Minutes (2,400m)
- University
- Secondary School
- Primary Schools
- † Place of Worship
- ⊕ GP and Pharmacies
- 🍴 Food stores

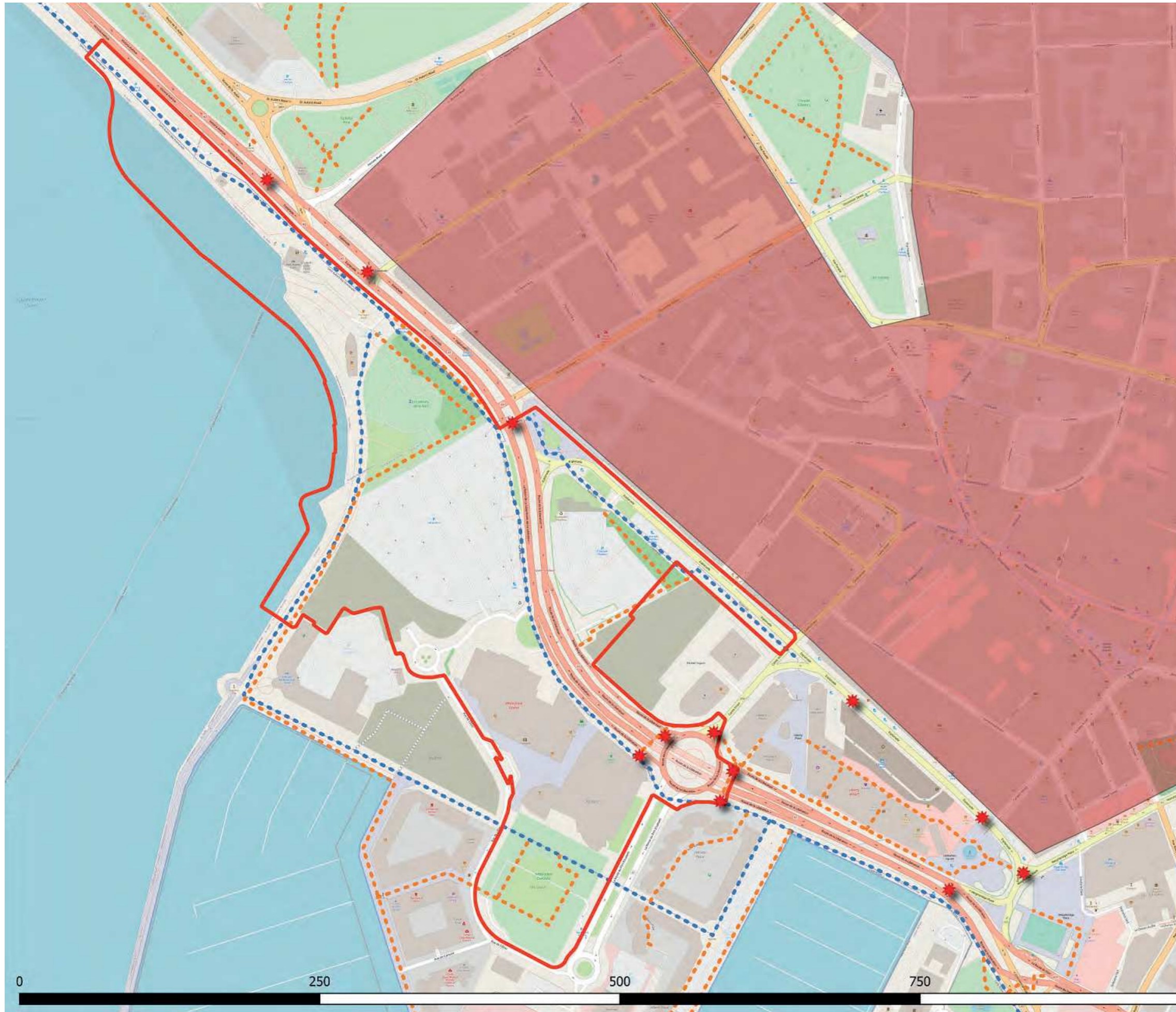


Project Details	WIE17128-100: The Waterfront, South West St Helier
Figure Title	Figure 10.3: Walking Isochrone for the Site
Figure Ref	WIE17128-100_GR_EIS_10.3A
Date	2022
File Location	\\s-inc\wiel\projects\wie17128\100\graphics\eis\issued figures

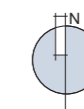
Source: WSP

© WATERMAN INFRASTRUCTURE & ENVIRONMENT

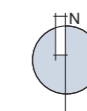
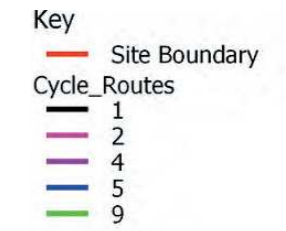
Reproduced from the Ordnance Survey maps with the permission of the Controller of Her Majesty's Stationery Office, © Crown copyright, Waterman Infrastructure & Environment, Pickfords Wharf, Clink Street, London SE1 9DG. Licence number LAN1000628.



- Key**
- Site Boundary
 - PROW**
 - - - Footpaths
 - - - Shared Use Cycleway
 - ★ Pedestrian Crossings
 - Urban Core



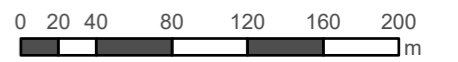
Project Details	WIE17128-100: The Waterfront, South West St Helier
Figure Title	Figure 10.4: Local Pedestrian Footpaths / Shared-Use Paths and Pedestrian Crossings
Figure Ref	WIE17128-100_GR_EIS_10.4A
Date	2022
File Location	\\s-inc\wiel\projects\wie17128\100\graphics\eis\issued figures



Project Details	WIE17128-100: The Waterfront, South West St Helier
Figure Title	Figure 10.5: Cycle Route Map
Figure Ref	WIE17128-100_GR_EIS_10.5A
Date	2022
File Location	\\s-incs\wie\projects\wie17128\100\graphics\eis\issued figures



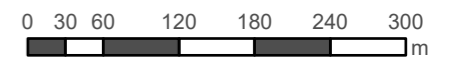
- Site Boundary
- Existing Receptor Location
- Proposed Receptor Location



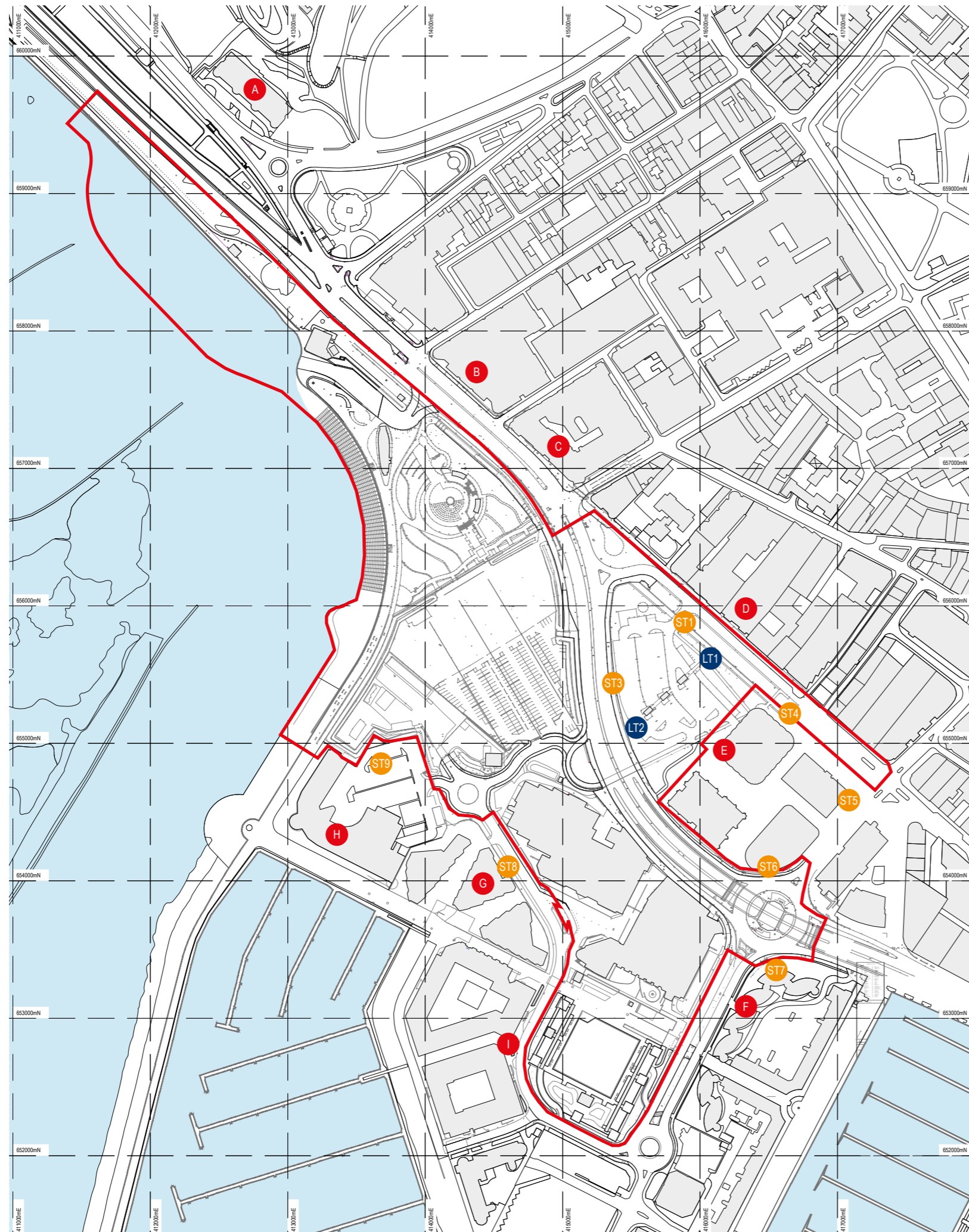
Project Details	WIE17128-100: The Waterfront, South West St Helier
Figure Title	Figure 11.1: Site Plan and Receptor Locations
Figure Ref	WIE17128-100_GIS_EIS_11.1A
Date	December 2022
File Location	\\s-b\WIEL\Projects\WIE17128\100 - EIA\9_GIS\WIE17128-100_GIS_EIA\







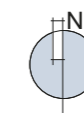
- Site Boundary
- 20m from Site Boundary
- 50m from Site Boundary
- 100m from Site Boundary
- 350m from Site Boundary



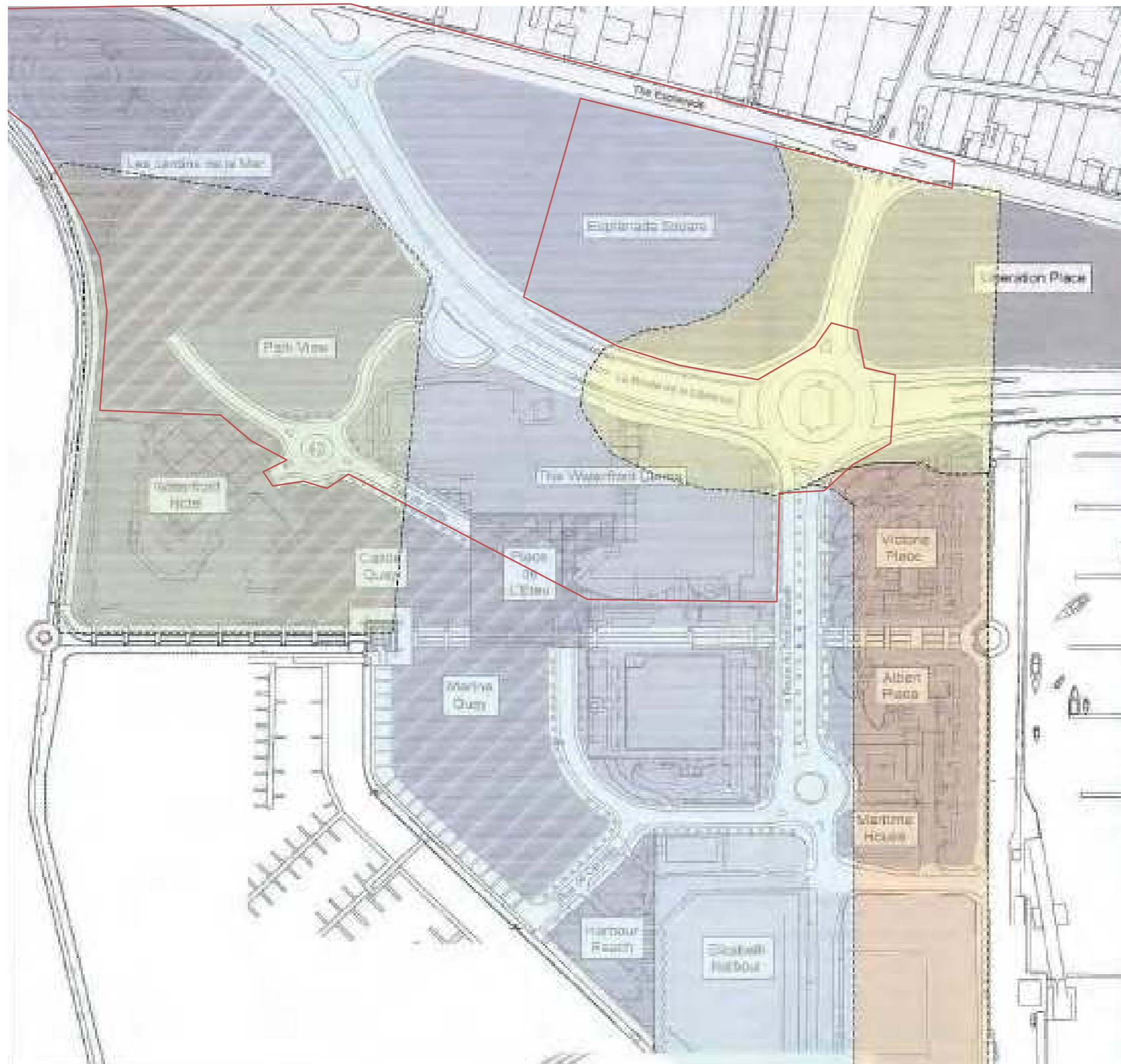
Project Details	WIE17128-100: The Waterfront, South West St Helier
Figure Title	Figure 11.2: Construction Phase Assessment Bands
Figure Ref	WIE17128-100_GIS_EIS_11.2A
Date	December 2022
File Location	\\s-b\WIEL\Projects\WIE17128\100 - EIA\9_GIS\WIE17128-100_GIS_EIA\



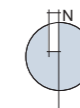
-  Planning Application Boundary
-  Short-term Noise Monitoring Locations
-  Long-term Noise Monitoring Locations
-  Noise Sensitive Receptors



<p>Project Details</p> <p>Figure Title</p> <p>Figure Ref</p> <p>Date</p> <p>File Location</p>	<p>WIE17128-100: The Waterfront, South West St Helier</p> <p>Figure 12.1: Noise Monitoring Locations and Noise Sensitive Receptors</p> <p>WIE17128-100_GR_EIS_12.1A</p> <p>2022</p> <p>\\s-inc\wiel\projects\wie17128\100\graphics\eis\issued figures</p>
---	---



- Site Boundary
- Zone 1: Earliest area of fill. Ash mixed with inert fill during dumping. ~40% of fill to 5.7m consists of ash. (Victoria Place)
- Zone 2: Forms part of early fill area. ~5-6% of fill consists of ash.
- Zone 3: Some discontinuous layers of ash. <7% of fill to 5m consists of ash. (Esplanade Square, Les Jardins, Waterfront, Elizabeth Harbour)
- Zone 4: Most recently filled area. Only trace quantities of ash detected. (Waterfront Hotel Park View)

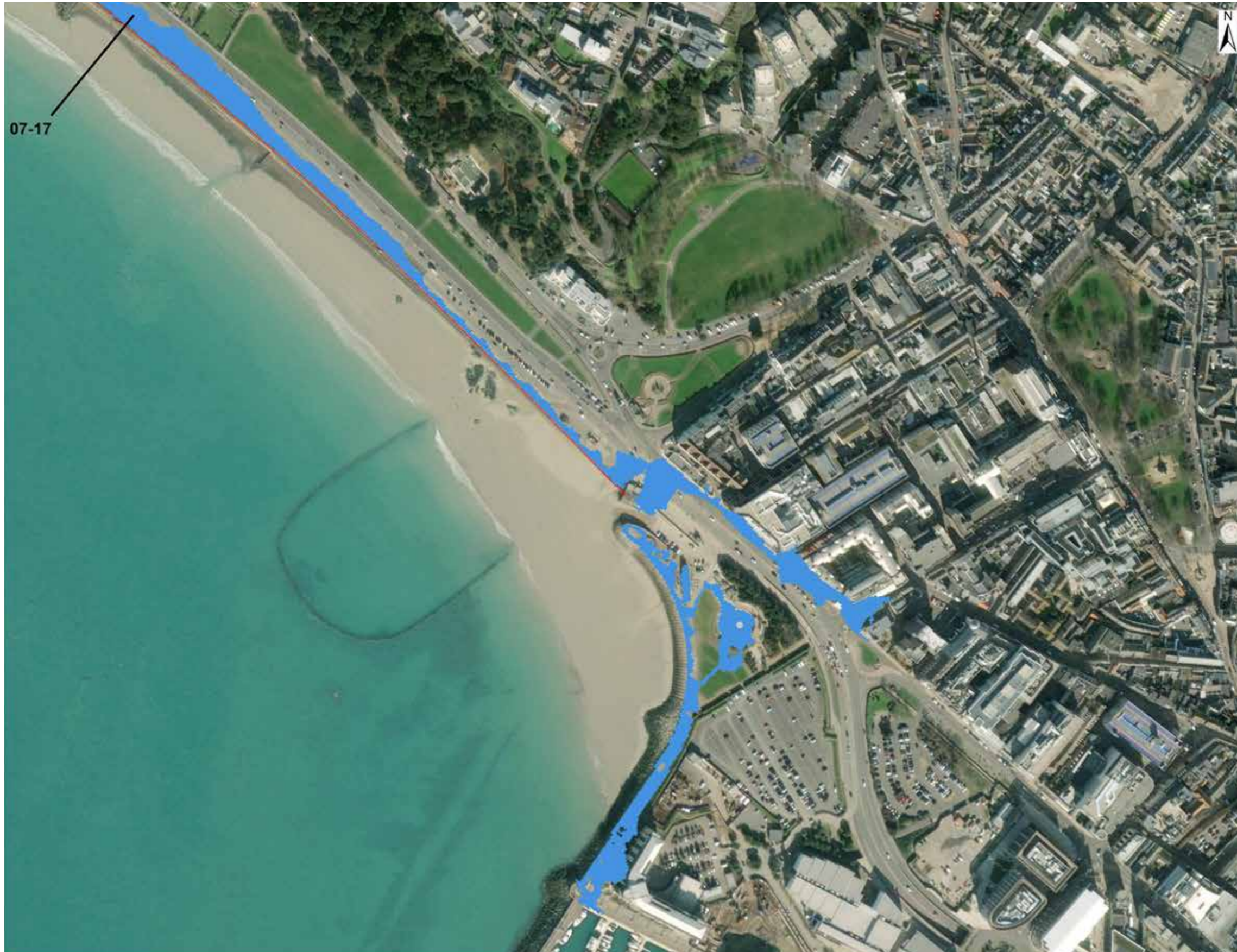


<p>Project Details</p> <p>Figure Title</p> <p>Figure Ref</p> <p>Date</p> <p>File Location</p>	<p>WIE17128-100: SWSH Visioning Framework</p> <p>Figure 13.1: Geological Zoning</p> <p>WIE17128-100_GR_ES_13.1A</p> <p>October 2022</p> <p>\\s-inc\wiel\projects\wie17128\100\graphics\es\issued figures</p>
---	--

Source: Contaminant Zoning Extract from WRc, 2004

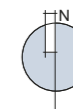
© WATERMAN INFRASTRUCTURE & ENVIRONMENT

Reproduced from the Ordnance Survey maps with the permission of the Controller of Her Majesty's Stationery Office, © Crown copyright, Waterman Infrastructure & Environment, Pickfords Wharf, Clink Street, London SE1 9DG. Licence number LAN1000628.



Defences used in Overtopping Analysis

2020 200yr



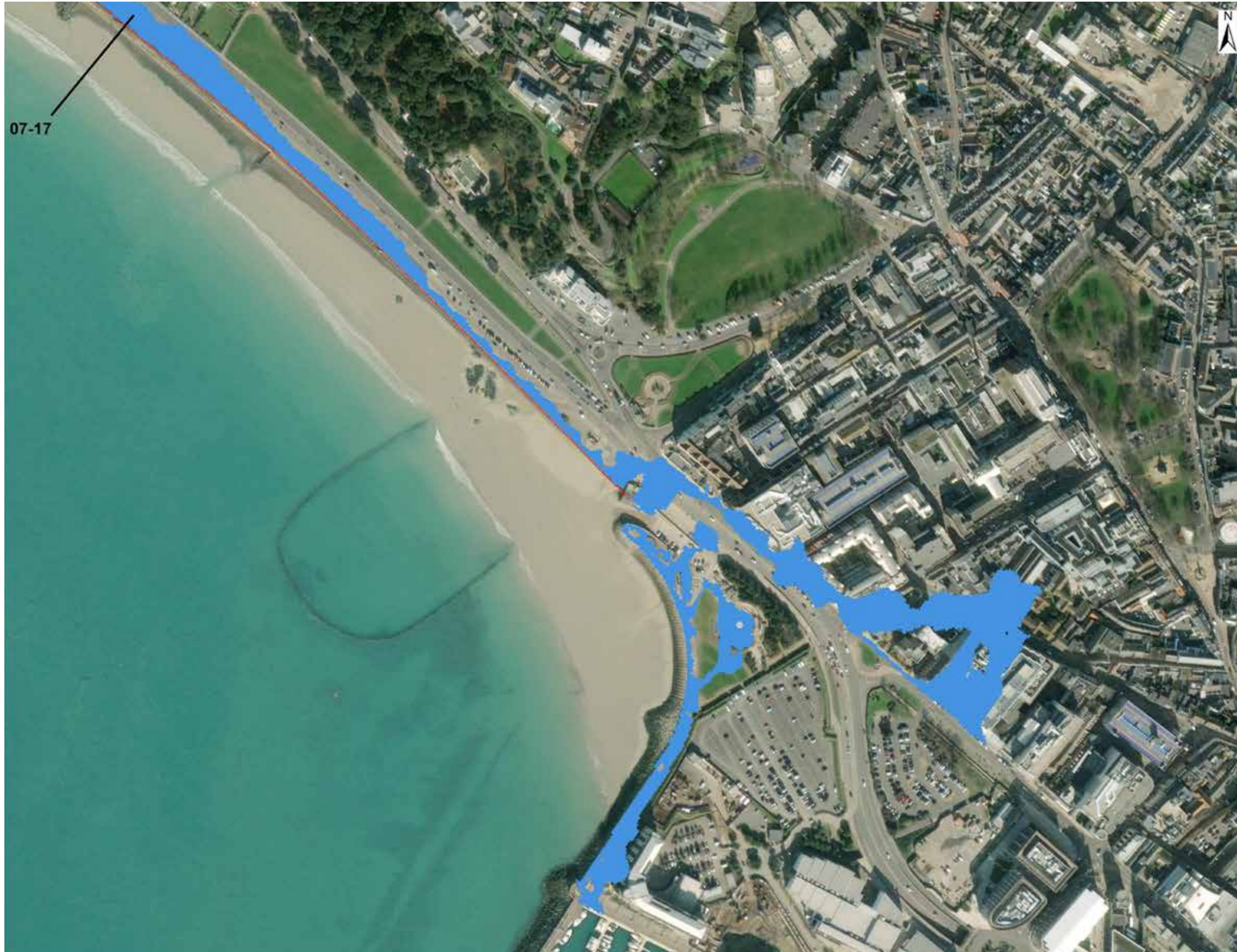
Project Details WIE17128-100: SWSH Visioning Framework

Figure Title Figure 14.1: 0.5% Joint Probability Annual Exceedance Probability (1 in 200 year return period) Projected for 2020

Figure Ref WIE17128-100_GR_ES_14.1A

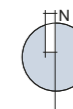
Date 2021

File Location \\s-inc\wiel\projects\wie17128\100\graphics\es\issued figures



Defences used in Overtopping Analysis

2070 200yr



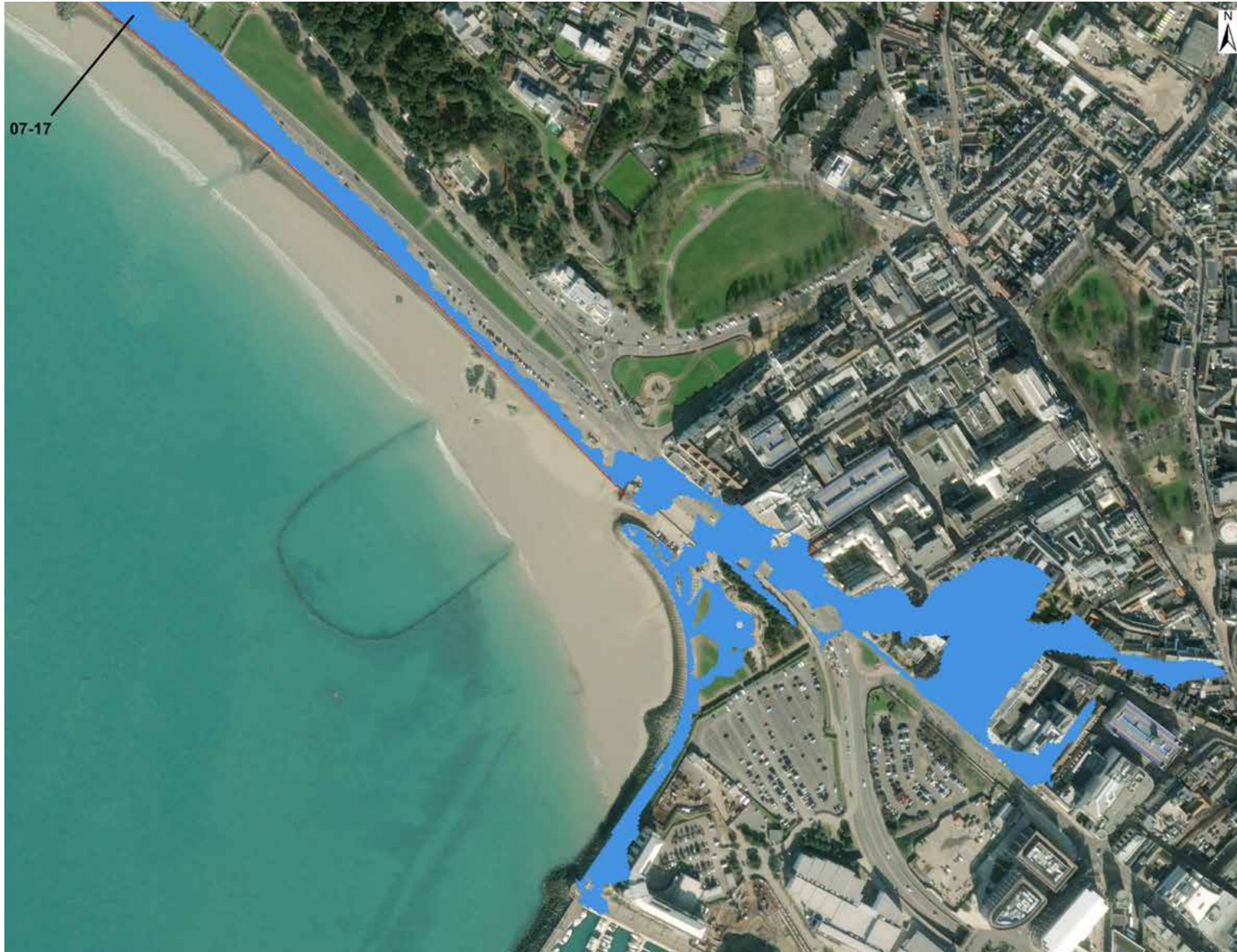
Project Details WIE17128-100: SWSH Visioning Framework

Figure Title Figure 14.2: 0.5% Joint Probability Annual Exceedance Probability (1 in 200 year return period) Projected for 2070

Figure Ref WIE17128-100_GR_ES_14.2A

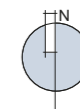
Date 2021

File Location \\s-incs\wie\projects\wie17128\100\graphics\es\issued figures



 Defences used in Overtopping Analysis

 2120 200yr



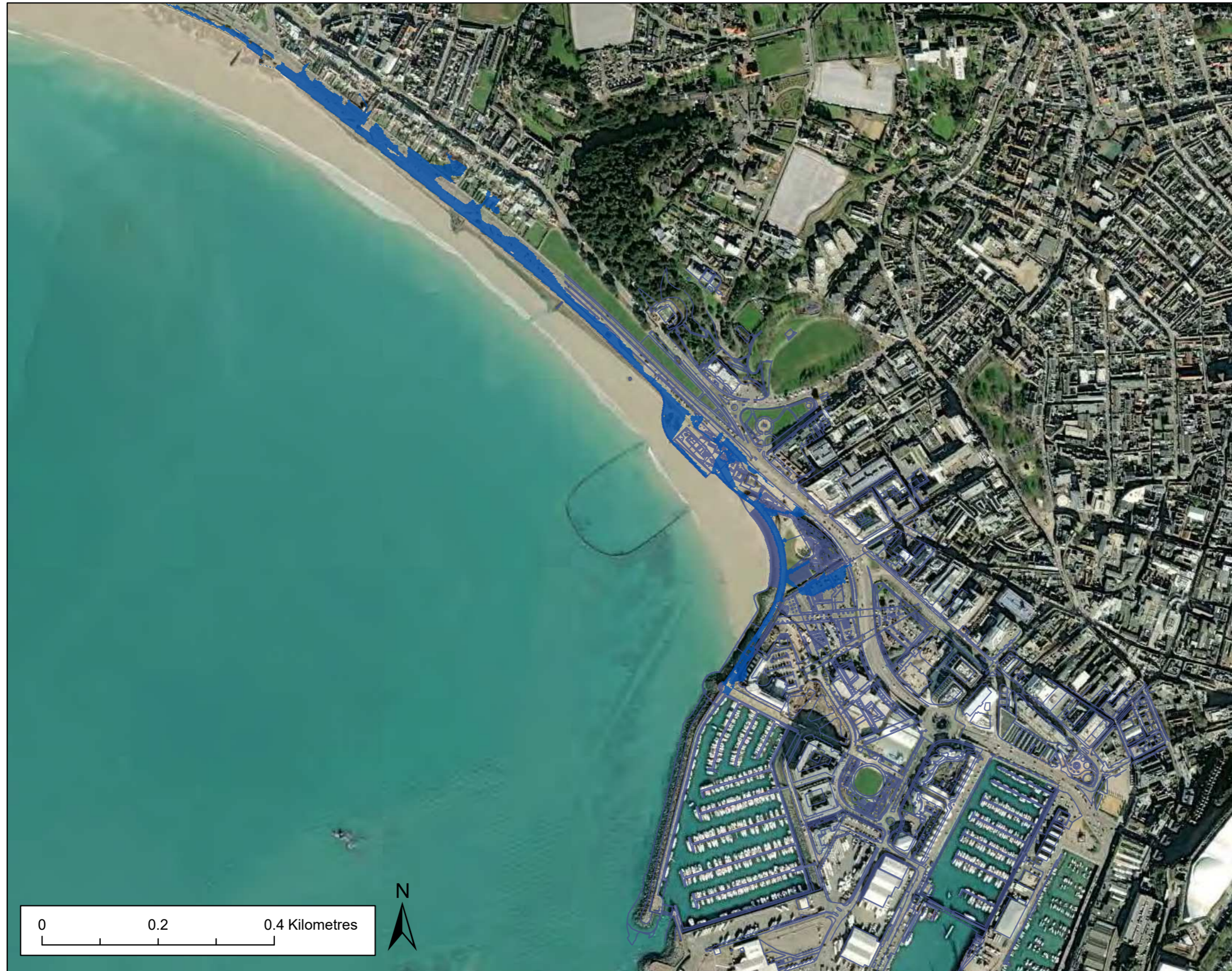
Project Details WIE17128-100: SWSH Visioning Framework

Figure Title Figure 14.3: 0.5% Joint Probability Annual Exceedance Probability (1 in 200 year return period) Projected for 2120

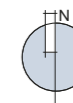
Figure Ref WIE17128-100_GR_ES_14.3A

Date 2021

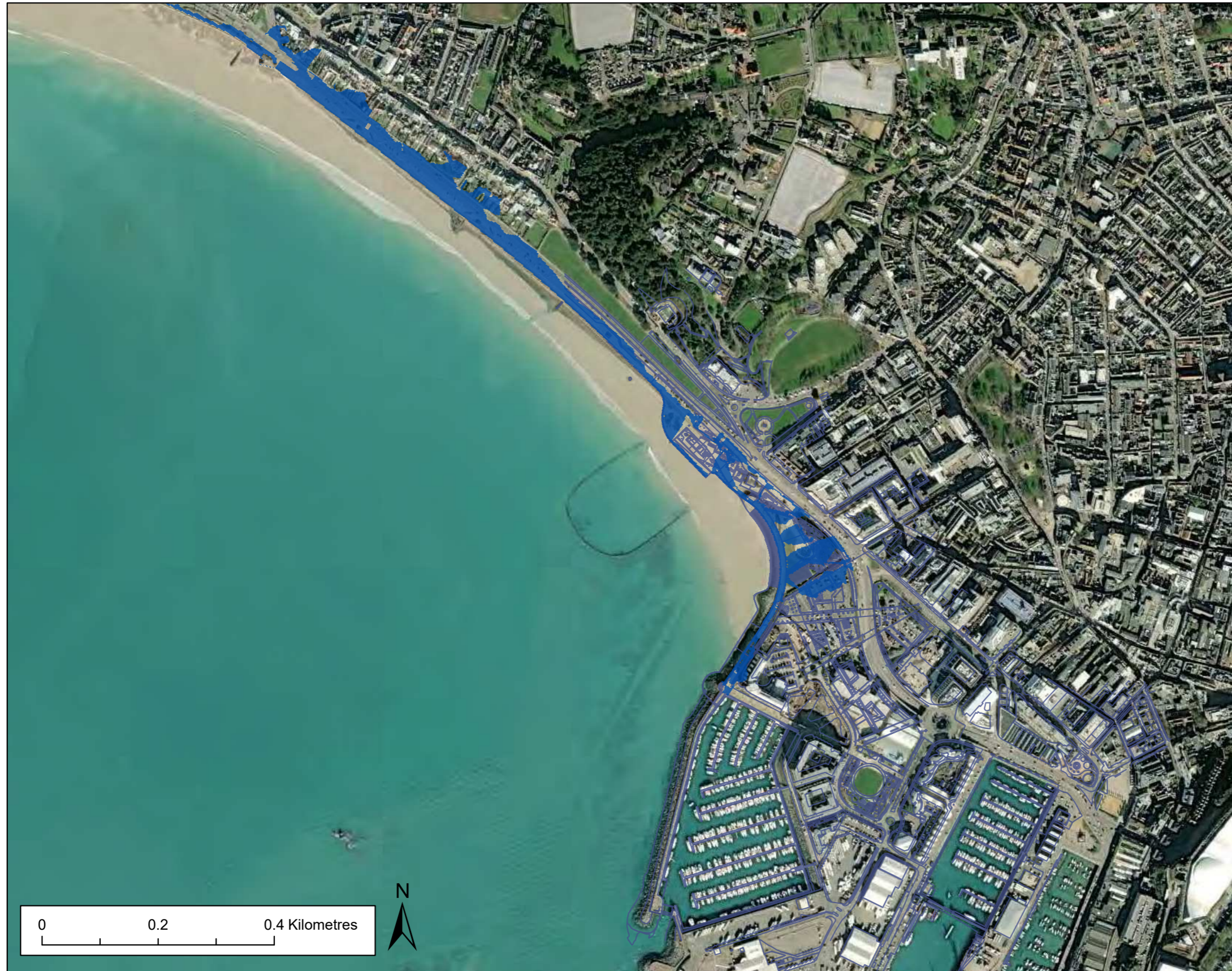
File Location \\s-incs\wie\projects\wie17128\100\graphics\es\issued figures





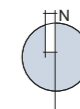
-  Final Masterplan
-  Areas of Overtopping Flooding from a 0.5% AEP (1 in 200yr Return Period) Projected for 2020



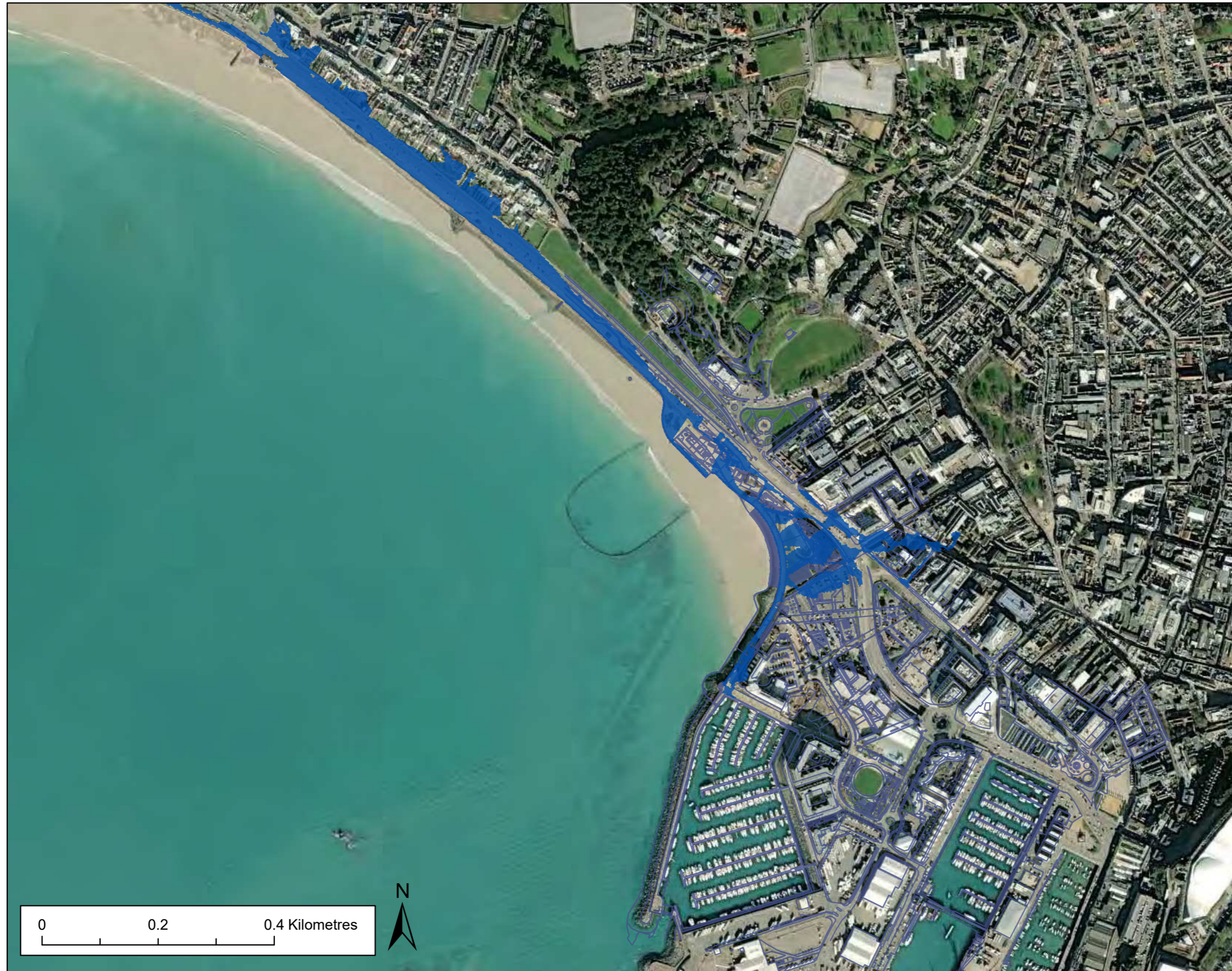
Project Details	WIE17128-100: SWSH Visioning Framework
Figure Title	Figure 14.4: 0.5% Joint Probability Annual Exceedence Probability (1 in 200 year return period) Projected for 2020 - Proposed Development.
Figure Ref	WIE17128-100_GR_ES_14.4A
Date	2021
File Location	\\s-incs\wie\projects\wie17128\100\graphics\es\issued figures



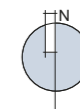
-  Final Masterplan
-  Areas of Overtopping Flooding from a 0.5% AEP (1 in 200yr Return Period) Projected for 2070



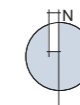
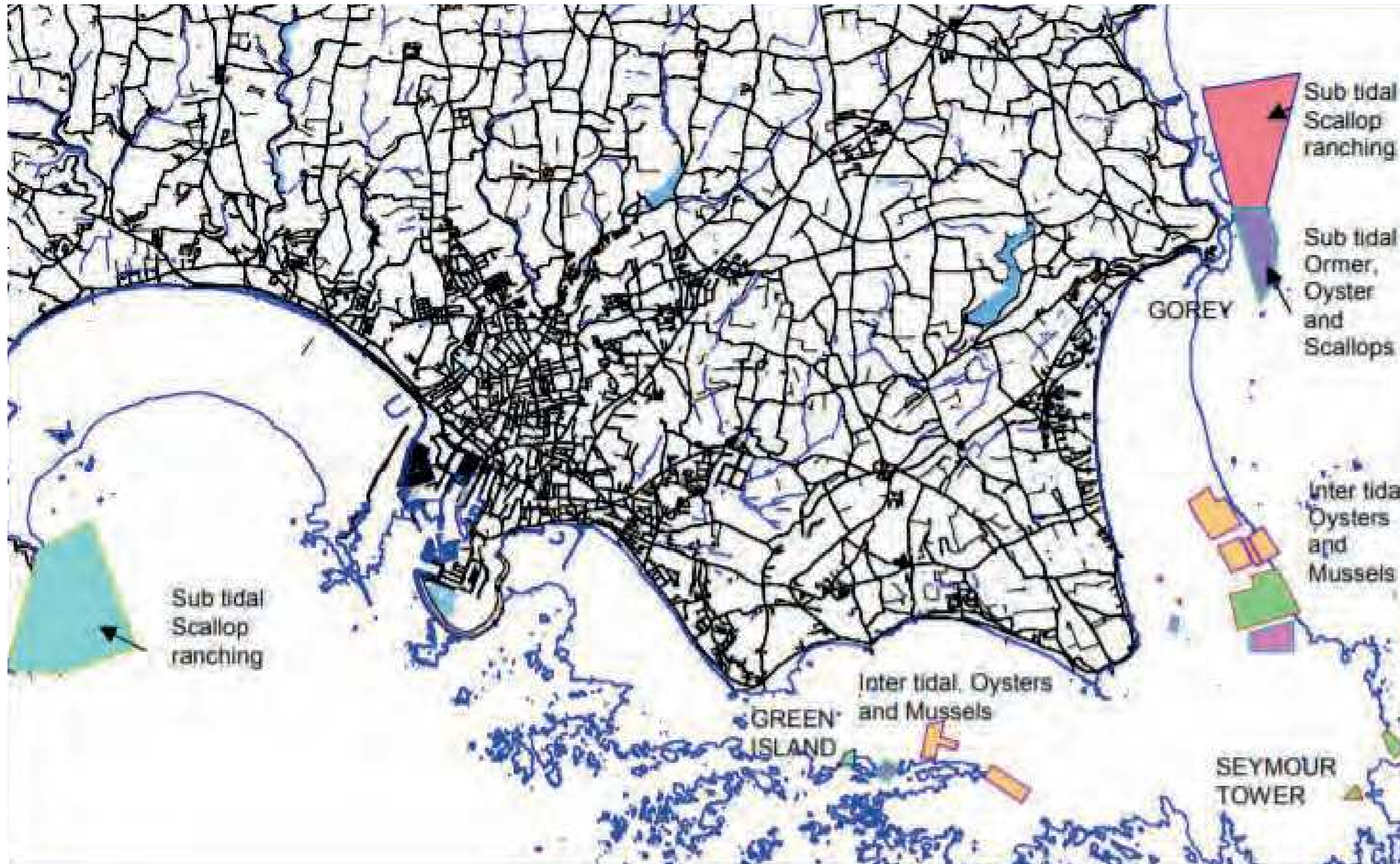
Project Details	WIE17128-100: SWSH Visioning Framework
Figure Title	Figure 14.5: 0.5% Joint Probability Annual Exceedence Probability (1 in 200 year return period) Projected for 2070 - Proposed Development.
Figure Ref	WIE17128-100_GR_ES_14.5A
Date	2021
File Location	\\s-incs\wie\projects\wie17128\100\graphics\es\issued figures



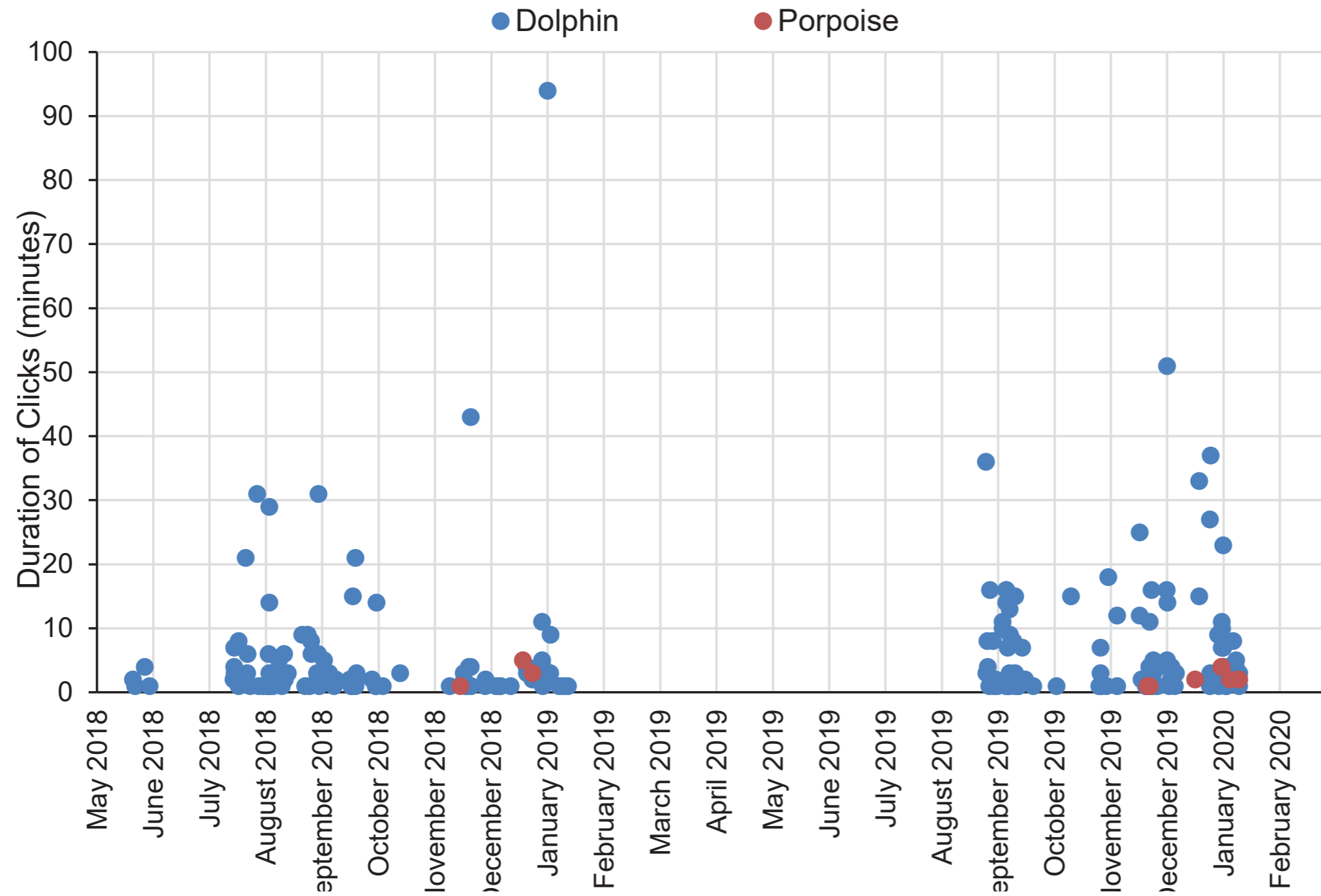
-  Final Masterplan
-  Areas of Overtopping Flooding from a 0.5% AEP (1 in 200yr Return Period) Projected for 2120



Project Details	WIE17128-100: SWSH Visioning Framework
Figure Title	Figure 14.6: 0.5% Joint Probability Annual Exceedence Probability (1 in 200 year return period) Projected for 2120 - Proposed Development.
Figure Ref	WIE17128-100_GR_ES_14.6A
Date	2021
File Location	\\s-incs\wie\projects\wie17128\100\graphics\es\issued figures



Project Details	WIE17128-100: SWSH Visioning Framework
Figure Title	Figure 15.1: Aquaculture Concessions as of December 2009 (GoJ, 2019)
Figure Ref	WIE17128-100_GR_ES_15.1A
Date	2021
File Location	\\s-inc\wie\projects\wie17128\100\graphics\es\issued figures



Project Details	WIE17128-100: SWSH Visioning Framework
Figure Title	Figure 15.2: Hydrophone Data (using CPODs) from the GoJ Showing the Duration of Encounters of Marine Mammals
Figure Ref	WIE17128-100_GR_ES_15.2A
Date	2021
File Location	\\s-inc\wiel\projects\wie17128\100\graphics\es\issued figures

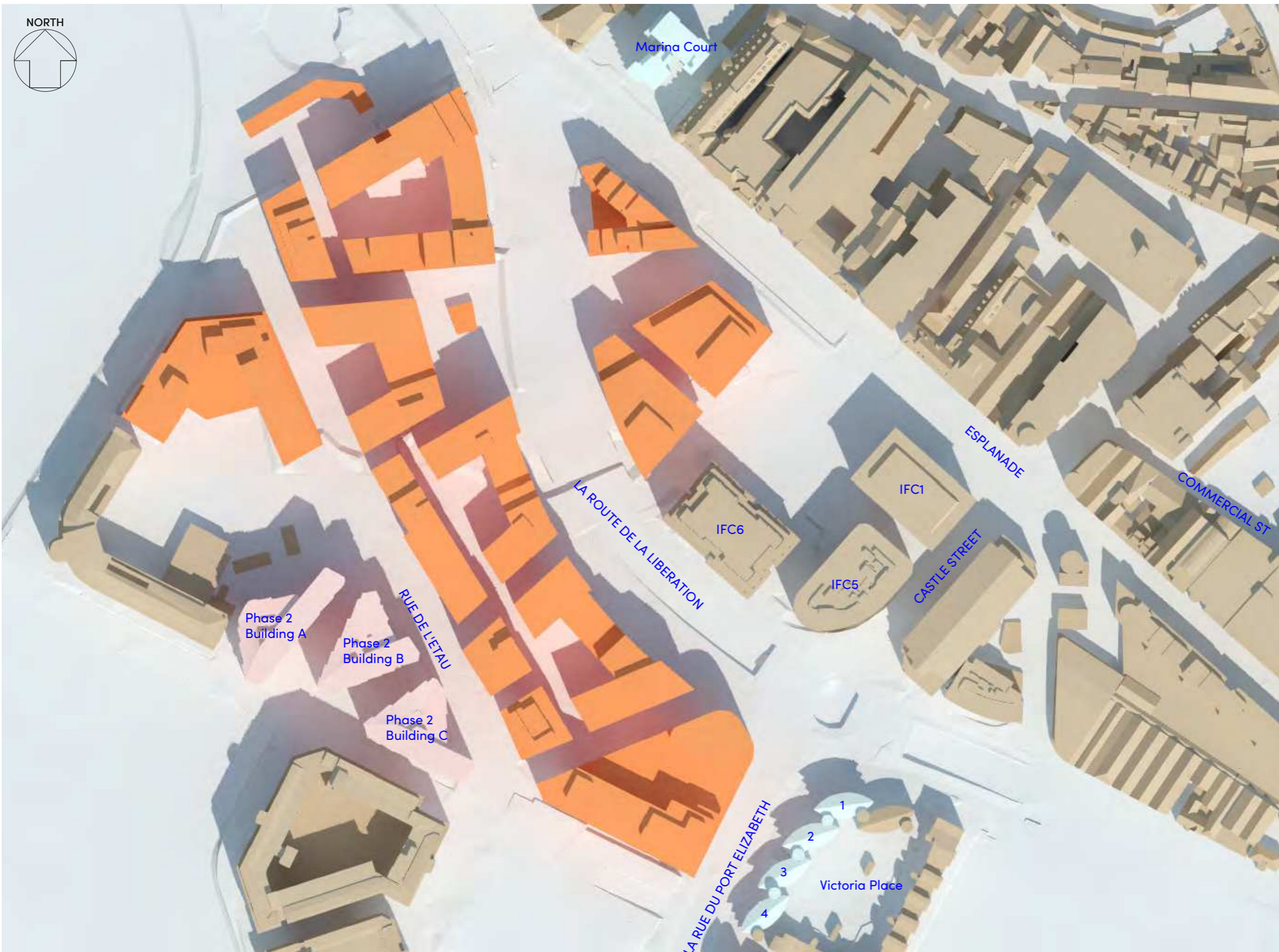


Project Details	WIE17128-100: SWSH Visioning Framework
Figure Title	Figure 15.3: Area of Permanent Loss of Intertidal Habitat Below Mean High Water Springs (MHWS) Level
Figure Ref	WIE17128-100_GR_ES_15.3A
Date	2021
File Location	\\s-inc\wie\projects\wie17128\100\graphics\es\issued figures



- Existing Building
- Surrounding Buildings (Analysed)
- Surrounding Buildings (Context)
- Consented/Under Construction Buildings

Project Details	WIE17128-100: The Waterfront, South West St Helier
Figure Title	Figure 16.1: Daylight / Sunlight Assessment - Future Baseline Context
Figure Ref	WIE17128-100_GR_EIS_16.1A
Date	2022
File Location	\\s-incs\wie\projects\wie17128\100\graphics\eis\issued figures



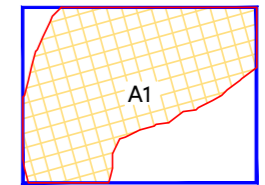
- Proposed Development
- Surrounding Buildings (Analysed)
- Surrounding Buildings (Context)
- Consented/Under Construction Buildings (Analysed)





Project Details	WIE17128-100: The Waterfront, South West St Helier
Figure Title	Figure 16.2: Daylight / Sunlight Assessment - Complete and Operational Development Context
Figure Ref	WIE17128-100_GR_EIS_16.2A
Date	2022
File Location	\\s-incs\wie\projects\wie17128\100\graphics\eis\issued figures

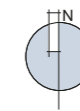


- Proposed Development
- Surrounding Buildings (Analysed)
- Surrounding Buildings (Context)
- Consented/Under Construction Buildings (Analysed)
- Consented/Under Construction Buildings (Context)

Project Details	WIE17128-100: The Waterfront, South West St Helier
Figure Title	Figure 16.3: Daylight / Sunlight Assessment - Cumulative Context
Figure Ref	WIE17128-100_GR_EIS_16.3A
Date	2022
File Location	\\s-incs\wie\projects\wie17128\100\graphics\eis\issued figures



-  Proposed Area Receiving Over 2 Hours of Sun
-  Amenity Area
-  Proposed Development
-  Surrounding Buildings (Context)



Project Details	WIE17128-100: The Waterfront, South West St Helier
Figure Title	Figure 16.4: Sunlight Availability to Amenity Spaces
Figure Ref	WIE17128-100_GR_EIS_16.4A
Date	2022
File Location	\\s-incs\wie\projects\wie17128\100\graphics\eis\issued figures

UK and Ireland Office Locations

